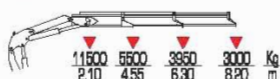
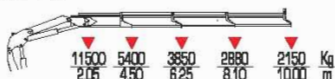


[26 P][26 P]^{LC}

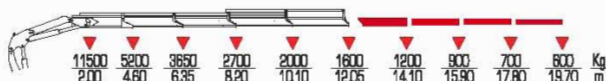
26022 P



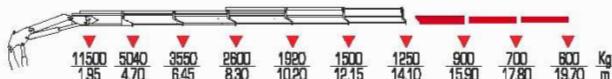
26023 P



26024 P



26025 P



26023 P + J52



26023 P + J53





26024 P + J52







26024 P + J53



	 tm	 kNm	 v _{min}	 Mpa	
26022 P	25,1	245	40	30	408
26023 P	24,3	238	40	30	408
26024 P	24,0	234	40	30	408
26025 P	23,7	232	40	30	408
26023 P + J52	-	-	40	30	408
26023 P + J53	-	-	40	30	408
26024 P + J52	-	-	40	30	408
26024 P + J53	-	-	40	30	408



 kg	ST	LC				
2595	2735	2440	2345	1035		26022 P
2765	2905	2440	2345	1035		26023 P
2905	3045	2470	2345	1035		26024 P
3045	3185	2500	2345	1100		26025 P
3250	3410	2440	2500	1250		26023 P + J52
3335	3495	2470	2545	1250		26023 P + J53
3390	3550	2470	2500	1250		26024 P + J52
3475	3635	2470	2545	1250		26024 P + J53